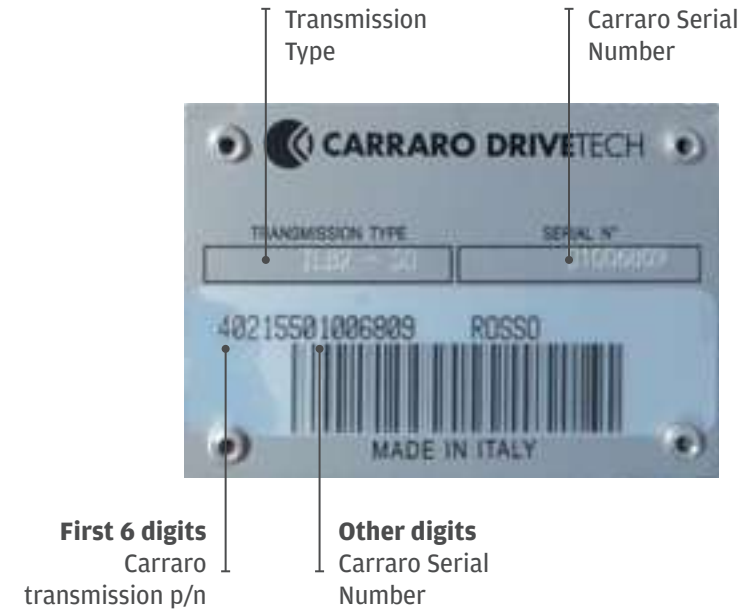
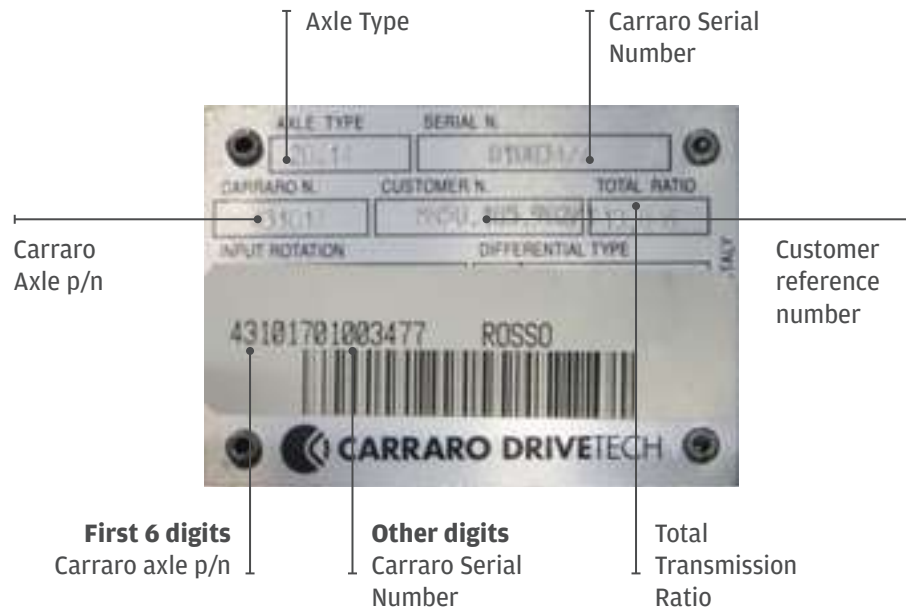


How to recognize a Carraro product

1. The **metallic plate** fixed on the axle or transmission is the first way to recognize a Carraro product. It includes all necessities information to recognize the product and to make sure you are ordering the correct spare parts:

- › **Carraro brand**
- › **Axle/transmission model (type)**
- › **Carraro axle/transmission part number**



2. If there is no identification plate, you can read the **five/six-digits number** molded in cast iron (wheel hub, beam central body, differential support, swivel housing, etc).



5 digits number__wheel hub



5 digits number__beam central body



6 digits number__half housing transmission



6 digits number__axle beam

This code allows the identification of the axle or transmission, making possible to identify the correct number of the component.

3. Also the planetary carrier cover can help to recognize a Carraro axle.

